

**RUNWAY SAFETY AREA**

**ULTIMATE RUNWAY SAFETY AREA DIMENSIONS**

RUNWAY	WIDTH	LENGTH BEYOND RWY END
5/23	150'	300'
14/32	150'	300'

**RUNWAY OBJECT FREE AREA**

**ULTIMATE RUNWAY OBJECT FREE AREA DIMENSIONS**

RUNWAY	WIDTH	LENGTH BEYOND RWY END
5/23	500'	300'
14/32	500'	300'

**RUNWAY PROTECTION ZONE DATA (RPZ)**

**ULTIMATE RUNWAY PROTECTION ZONE DIMENSIONS**

RUNWAY	BASE	LENGTH	OUTER WIDTH
5	250'	1000'	450'
23	250'	1000'	450'
14	500'	1000'	700'
32	500'	1000'	700'

**RUNWAY END COORDINATES**

**ULTIMATE RUNWAY END COORDINATES**

RUNWAY	STA.	LATITUDE	LONGITUDE
5	STA. 110+00	45°-49'-11.575" N	92°-22'-41.284" W
23	STA. 149+00	45°-49'-38.589" N	92°-22'-02.048" W
14	STA. 305+95	45°-49'-41.917" N	92°-22'-52.392" W
32	STA. 355+95	45°-49'-06.062" N	92°-22'-03.871" W

**RUNWAY DATA**

	RUNWAY 5/23		RUNWAY 14/32	
	ULTIMATE	ULTIMATE	ULTIMATE	ULTIMATE
RUNWAY DIMENSIONS	75' X 3,900'	75' X 5,000'		
EFFECTIVE GRADIENT (%)	0.131%	0.074%		
WIND COVERAGE	10.5 KNOTS	84.0%	87.2%	
	13 KNOTS	90.5%	92.7%	
RUNWAY VISIBILITY MINIMUMS	1 MILE/1 MILE	VISUAL/1 MILE		
PAVEMENT STRENGTH *	12.5 (S)	30 (S)		
APPROACH SLOPE (DESIGN)	5	23	14	32
	20:1	20:1	20:1	34:1
APPROACH SLOPE (ACTUAL)	5	23	14	32
	17.1:1	11.9:1	17.1:1	6.3:1
RUNWAY LIGHTING	MIRL		MIRL	
RUNWAY MARKING	NPI		NPI	
RUNWAY PAVEMENT TYPE	BIT.		BIT.	
NAVIGATION AIDS	5	23	14	32
	PAPI, REILS	PAPI, REILS	PAPI, REILS	PAPI, REILS

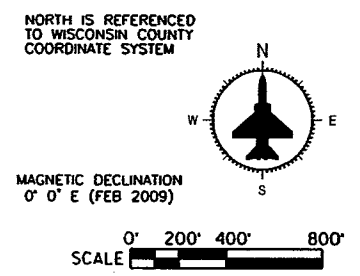
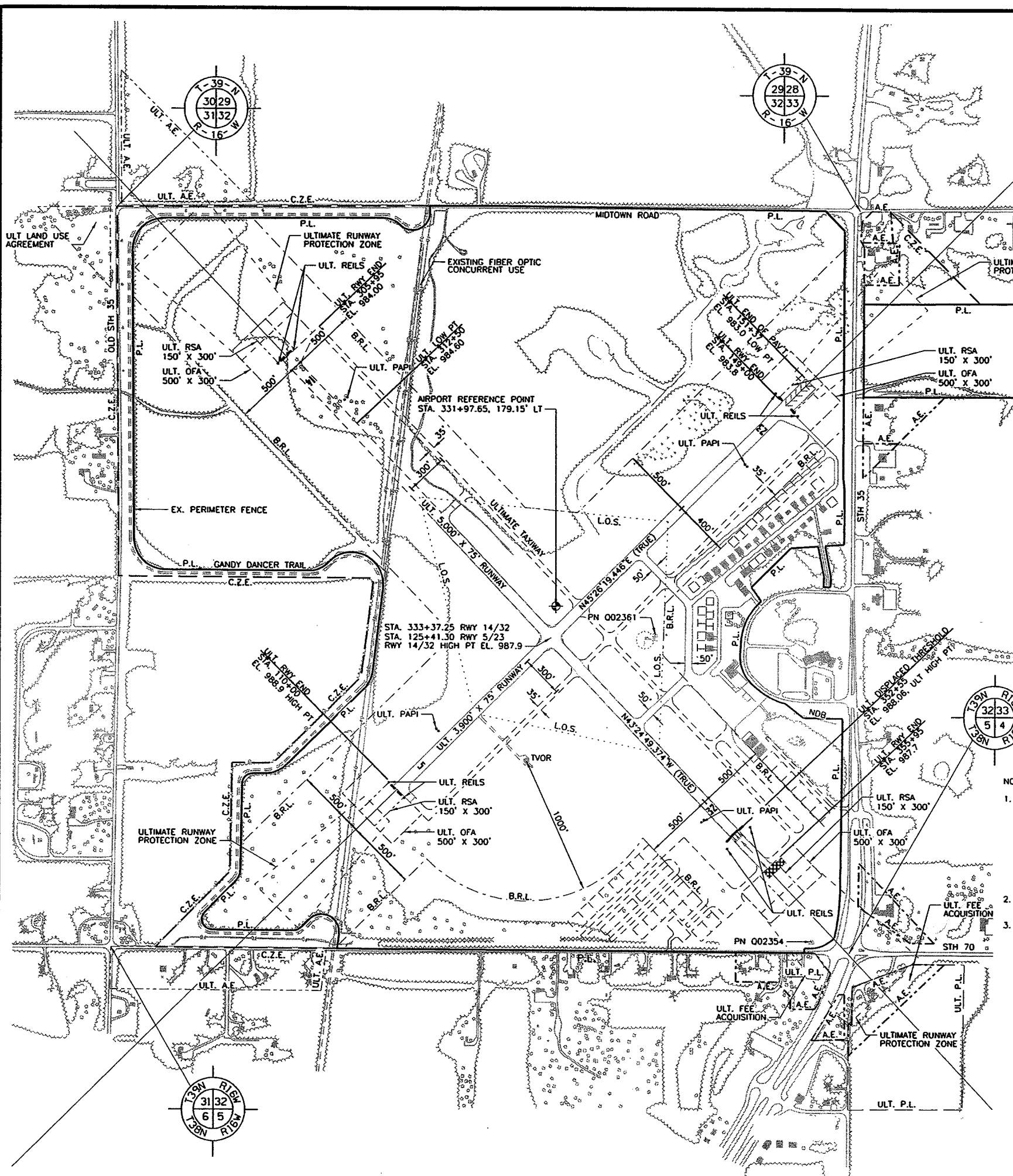
\* VALUES GIVEN ARE GROSS AIRCRAFT WEIGHT IN 1000# SINGLE (S), DUAL (D) & DUAL TANDUM (DT), GEAR AIRCRAFT

**LEGEND**

EXISTING	ULTIMATE	DESCRIPTION
---	---	RUNWAYS AND TAXIWAYS
---	---	ROADWAYS
---	---	AIRPORT PROPERTY LINE (P.L.)
---	---	BUILDING RESTRICTION LINE (B.R.L.)
---	---	AVIGATION EASEMENTS (A.E.)
---	---	CLEAR ZONE EASEMENTS (C.Z.E.)
---	---	RUNWAY SAFETY AREAS
---	---	RUNWAY OBJECT FREE AREAS

**SURVEY CONTROL MONUMENTS**

POINT NO.	ELEVATION	DESCRIPTION
Q02361	985.18	NGS STATION PAUL STA. 338+35.25 RWY 14/32, 556.68' LT.
Q02354	989.99	NGS STATION HEIDI STA. 361+90.74 RWY 14/32, 129.48' RT.



- NOTES:**
- WHEN PROPERTY INTEREST IS PURCHASED CONSIDERATION WILL INCLUDE THE FOLLOWING:
    - LIMITS OF LAND ELIGIBLE FOR FAA PARTICIPATION.
    - DESIRES OF PROPERTY OWNER.
    - EXISTING PROPERTY OWNERSHIP BOUNDARIES.
    - PROTECTION OF THE IMAGINARY SURFACES DESCRIBED IN FAR. PART 77.25
    - EXISTING LAND USE ZONING CONTROLS.
 PROPERTY INTEREST WILL BE ACQUIRED BY FEE OR AIR EASEMENT RIGHTS.
  - EXISTING AIRPORT PROPERTY AND PROPERTY INTERESTS TO BE ACQUIRED ARE SHOWN BASED ON RESEARCH OF RECORDED PLATS AND DEEDS.
  - ULTIMATE FENCE TO FOLLOW PROPERTY LINE.

DATE	REVISIONS	FRM/AGENCY	BY

**MSA**  
PROFESSIONAL SERVICES

TRANSPORTATION • MUNICIPAL DEVELOPMENT • ENVIRONMENTAL  
2901 International Lane Madison, WI 53704  
608-242-7179 1-800-446-0679 Fax: 608-242-5664  
Web Address: www.msa-ps.com  
© MSA PROFESSIONAL SERVICES

WISCONSIN DEPARTMENT OF TRANSPORTATION  
BUREAU OF AERONAUTICS

**ULTIMATE AIRPORT LAYOUT DRAWING**  
BURNETT COUNTY AIRPORT  
SIREN, WISCONSIN

DESIGNER	DATE	PROJECT NO.	DRAFTER	CHECKER	SHEET NO.
MAG	2/27/09	9504200	MAG	MAH	3